



The Strength to Create
憑實力 創優勢

GammonSteel
金門 | 鋼構





Acting as a true partner for our clients, GammonSteel aims to provide complete professional structural steelwork services from pre-construction and design through project management to fabrication and installation, while working in ever more safe, environmentally-friendly, efficient and cost-effective ways.

Our vision is to sustain a dominant position in Hong Kong's structural steelwork market based on an unswerving commitment to safety, integrity and excellence, and to develop into the leading structural steelwork provider for Asia.

作為客戶忠誠的夥伴，金門鋼構以提供全面的專業鋼結構服務為宗旨，由建造的前期工作、設計、項目管理以至裝嵌一應俱全，並採取安全、環保、高效率和具成本效益的方法施工。

我們竭誠以安全、誠信和卓越的理念，致力在香港的鋼結構市場保持優勢，並繼往開來，發展成為亞洲首屈一指的鋼結構供應商。

The Strength to Create

GammonSteel is all about strength. A strength that lets our clients push the boundaries of what's possible.

Our steelwork is the strength behind some of the most challenging and inspiring projects in Hong Kong, China and Southeast Asia.

But the true strength of GammonSteel is the knowledge and expertise, backed-up by state-of-the-art facilities and equipments, that lets us take a project from design through fabrication to build with unbeatable attention to quality and an ability to innovate at every stage.

Since 2000, we have taken on tunnels, handled highrises, been involved with the most intricately crafted steel forms and the heaviest structural supports. So, whether mega structure or fine architectural feature, GammonSteel is the only one-stop-shop with the strength to take you beyond the expected.

憑實力 創優勢

金門鋼構以實力見稱，幫助客戶超越界限、突破常規。在香港以至中國內地及東南亞地區，不少極具挑戰和優秀的工程項目，都選用我們的鋼製品。

金門鋼構的真正實力源自專業知識和技術，以先進的設施和裝備作為後盾，提供一站式服務。由設計、裝嵌以至建構，每個階段都力求創新，堅持質量至上，力臻完美。

自二零零零年始，我們已承建多條隧道，參與多項高樓層式建築工程項目，當中有設計最複雜的鋼構形狀，亦有最重型的結構支架。無論是宏偉的結構，或是精巧的設計，金門鋼構都能提供一站式服務，憑藉我們的實力，讓您超越理想。

Control from Start to Finish

Analysis & Design. Fabricate. Build. These words that set GammonSteel apart and deliver exceptional value and quality to our clients.

As soon as a project is conceived GammonSteel is on the scene – and we are still there long after our steel components are installed.

It means we gain a complete understanding of your project. Our early input and planning saves costs at every stage. And we are able to apply stringent quality controls throughout the process.

Our professional in-house design and engineering team at Lambeth Associates draws on years of structural steel expertise to conceive high-quality, cost effective designs early in the process.

When we deliver our steel to your site, we've already put it together on computer using the latest 3-D technology and again at our huge wholly-owned fabrication facilities to minimise expensive delays where they matter most.

And our staff are always on site, using the latest machines from our Gammon Plant, to ensure the steel installation and erection goes without a hitch.

In every way and at every stage, working with one supplier and a single point-of-contact gives you and us total control.

Expertise through Experience

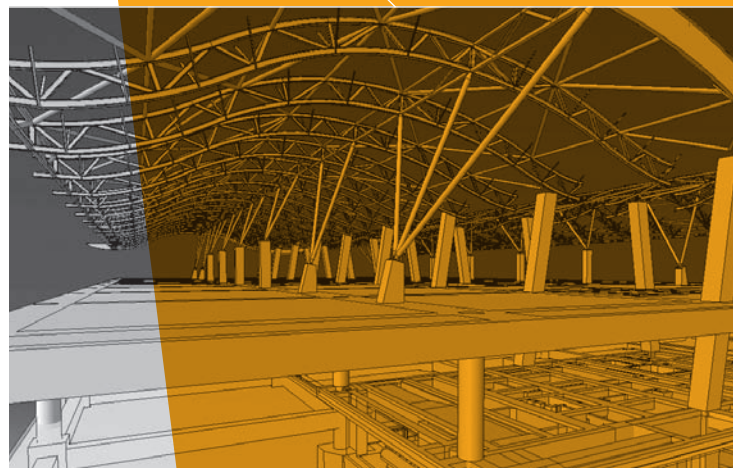
Expertise can only be built through experience. Since the 1980s, GammonSteel has crafted many thousands of tonnes of steel structures destined for hundreds of projects across Asia. On this proving ground, we have built a name for quality, innovation and absolute reliability.

Our talented workforce of 150 management and professional staff together with 400 skilled workmen in Hong Kong and Mainland China is at the heart of every project we take on. Steeped in the Gammon culture of excellence, every individual is focused on achieving the highest standards in a safety-first working environment that has made us Hong Kong's leading structural steelwork contractor.

Analysis 分析



Design 設計



全盤掌控 貫徹始終

Behind GammonSteel stands Gammon Construction – a US\$1.5 billion business employing 5,000 staff – bringing with it financial strength, local presence, and one of the strongest technical teams in Southeast Asia, including the cutting-edge engineering design team at Lambeth Associates.

金門鋼構的優勝之處，在於為客戶一手包辦「分析及設計、裝嵌、建造」，並創造非凡價值和超卓品質。我們在工程的構思階段已積極參與，緊密跟進至完成裝嵌鋼構組件為止。早期的參與和規劃不但為您節省成本，更可全程進行嚴格的質量管理。

我們集團旗下的琳寶工程顧問有限公司擁有專業設計和工程隊伍，具備多年鋼結構的知識和經驗，可在項目初期階段協助客戶構思優質而具成本效益的設計。

交付鋼製品時，我們利用先進的電腦3D科技進行模擬組裝，我們亦擁有規模龐大的裝嵌工場進行組裝，以減省延誤所造成的高昂費用。

我們的員工長駐工地，採用由金門機械部提供的最新型機械，確保鋼製品裝嵌妥當，順利完成。在不同情況和階段，採用單一供應商及聯絡點，透過一站式的服務，讓客戶亦能完全掌握工程的每項細節。

專業源自經驗

只有不斷累積經驗，才能出類拔萃。自八十年代，金門鋼構已經涉足亞洲地區，為數以百計的建築項目精心建造數以千噸的鋼結構。事實證明，我們以優質、創新和絕對可靠而享負盛名。

我們擁有優秀的員工隊伍，包括香港和中國內地的一百五十名管理和專業人才，以及四百名技術人員，為每個項目竭盡所能。他們致力實踐公司的「卓越」文化，在安全至上的工作環境下成就最高水平，使我們成為香港領先的鋼結構承建商。

金門建築是金門鋼構的強大後盾，每年營業額高達十五億美元，僱員五千名。其財務實力雄厚，植根香港，擁有東南亞最強大的技術團隊之一，其中包括琳寶工程顧問尖端的工程設計隊伍。

Fabrication 裝嵌



Build 建造



Better by Design

GammonSteel is perfectly equipped to get involved early in the design development stage of a project, contributing know-how and fresh ideas that will lead to valuable cost and time savings later in project.

Lambeth Associates, our professional in-house design and engineering consultant, brings over 35 years of experience to your project. Specialising in inventive approaches using the very latest techniques, Lambeth develops practical ways to deliver value engineering solutions that offer constructability, safety, savings on both cost and programme, and government approvals.

We specialise in the state-of-the-art design method – second-order nonlinear analysis. This new generation design method is particularly fit for steel structures

which are sensitive to buckling, local/global imperfection, $P-\Delta-\delta$ effects, material yielding, sequential loads and construction process.

In comparing with the traditional linear analysis in conjunction with effective length method, this new design technique has been proved an effective way, leading to significant saving in materials, and hence programme and cost advantages.

This advanced design using second-order analysis enables us to come up with innovative and bespoke method and sequence of construction, which particularly suits the needs of your projects.

以設計締造完美

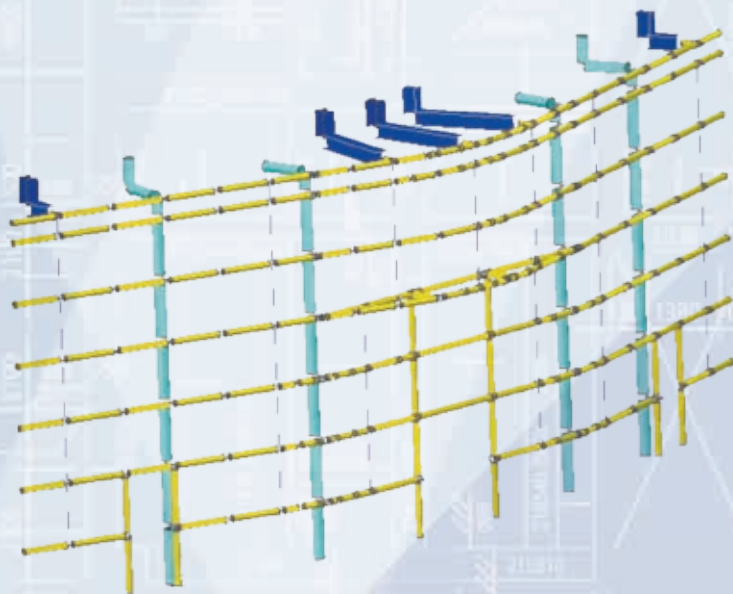
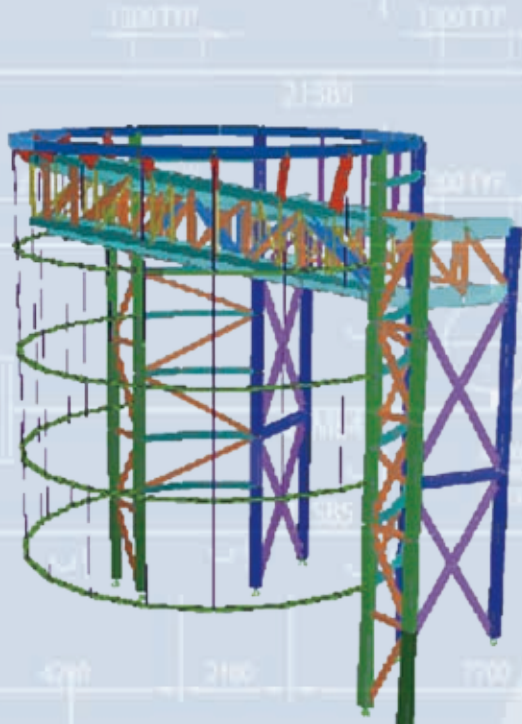
早於工程項目的設計發展階段，金門鋼構已經準備就緒，務求提供技術知識和嶄新思維，為工程節省時間和金錢。

琳寶工程顧問有限公司是金門建築的內部設計及工程顧問，擁有三十多年豐富經驗，善於採用最先進的技術，研究和實現創新而可行的施工方法，並能提供具建設性的工程解決方案，更兼顧安全、節省成本及審批時間。

我們精於尖端的設計方法——二階非線性分析(second-order nonlinear analysis)。這新一代的設計方法對下列情況敏感的鋼結構尤其適合，例如屈曲(buckling)、部分或整體缺陷(local/global imperfection)、 $P-\Delta-\delta$ 效應($P-\Delta-\delta$ effects)、材料屈服(material yielding)、順序負載(sequential loads)及建造過程等。

相比傳統的結合線性及有效長度方法的分析，這項嶄新設計技術已證實有效，能節省大量材料，在時間及成本上達致雙贏。

這先進設計採用二階非線性分析(second-order analysis)，讓我們構思創新而獨特的方法，制定建造的先後次序，切合每個工程項目的要求。



An Extra Dimension

Digital information models are employed to handle the increasing structural complexity of projects throughout the entire building process from conceptual design to fabrication, erection and construction management.

Building Information Modelling (BIM)

Generating 3-D computer models – is an invaluable tool for today's highly complex projects. Our expert technical team of over 30 people is practised in creating BIM models that combine every element of a project throughout its entire lifespan.

These models, including step-by-step animations, are essential for coordinating design requirements from multiple consultants, selecting optimal construction methods and sequences, planning and managing construction activities before a single weld is made.

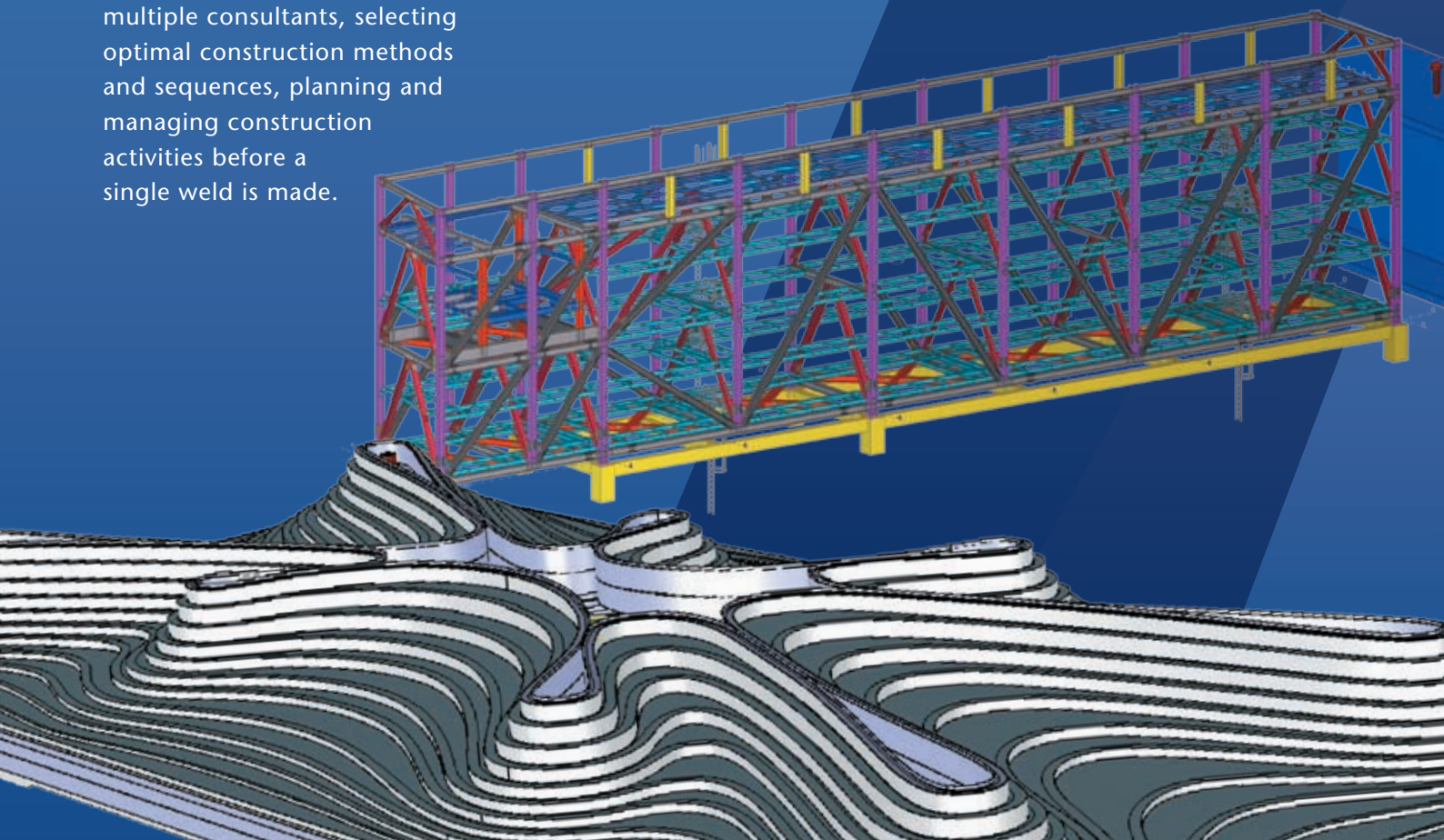
X-Steel

Our experienced team uses the latest Tekla X-Steel software in all aspects of structural steel detailing. We can create full 3-D structures from general engineering specifications and turn simple structural drawings, sketches and rough concepts into highly accurate representations. These provide a precise picture of each structural steel element, the connections between them and exact dimensions. All this ensures ideas are translated into cost-effective designs that fulfil client needs and comply with local building regulations.

Radio Frequency Identification

Using the latest Radio Frequency Identification (RFID) technology, we have developed our own Integrated Project and Quality Management System (IPQM). The system enhances management of materials, inventory and quality control throughout the fabrication process, and during the construction phase we can monitor project status in real-time to improve accuracy, forecast risks and take timely corrective actions.

The IPQM system can integrate with BIM models to give clients access to the same key data and can also be extended to facilities management activities.



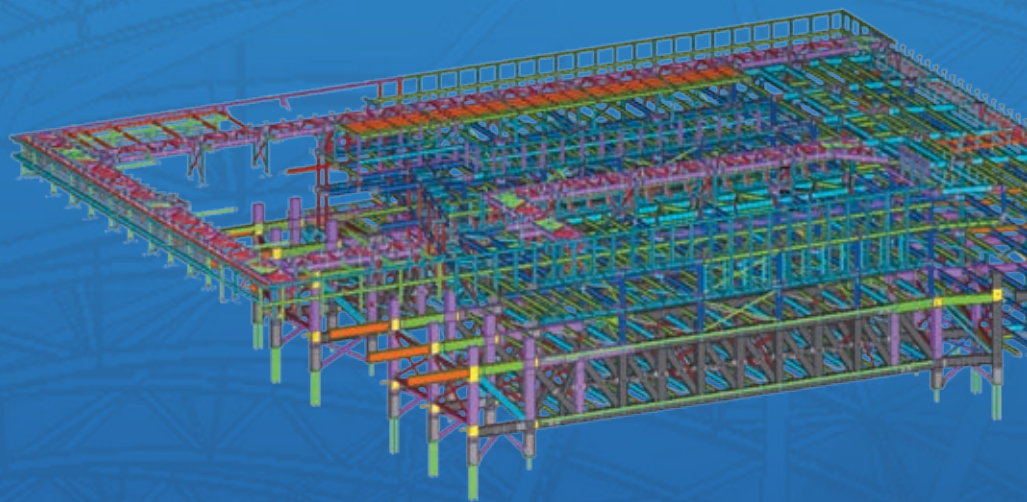
更臻完善

現今的工程項目在結構上日趨複雜，因此，在整個建造過程中，由概念設計、裝嵌、現場組裝和建造管理，我們均應用不同的數碼資訊模型處理。

建築資訊模型 (BIM)

在處理大型而複雜的工程來說，3D 電腦模型發揮了重大的功能。我們三十多人的專家隊伍利用先進的軟件製作建築資訊模型 (BIM)，在整個工程周期結合項目的每個工程細節。

在籌劃過程中，步驟式動畫能夠融匯多個顧問公司的設計要求，從而挑選最理想的建造方法及工序，有助妥善規劃和管理建造工程。



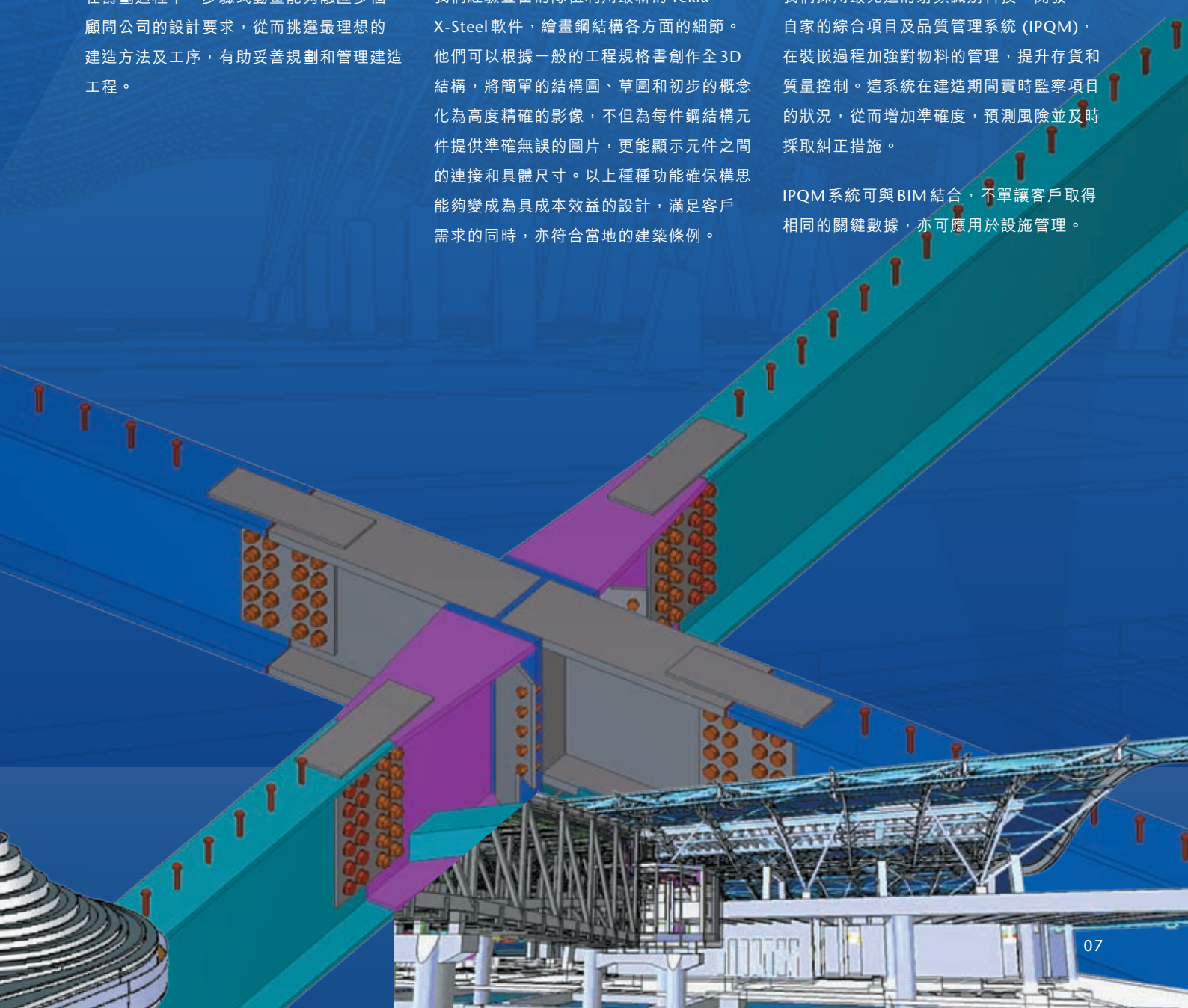
X-Steel

我們經驗豐富的隊伍利用最新的 Tekla X-Steel 軟件，繪畫鋼結構各方面的細節。他們可以根據一般的工程規格書創作全 3D 結構，將簡單的結構圖、草圖和初步的概念化為高度精確的影像，不但為每件鋼結構元件提供準確無誤的圖片，更能顯示元件之間的連接和具體尺寸。以上種種功能確保構思能夠變成為具成本效益的設計，滿足客戶需求的同時，亦符合當地的建築條例。

射頻識別

我們採用最先進的射頻識別科技，開發自家的綜合項目及品質管理系統 (IPQM)，在裝嵌過程加強對物料的管理，提升存貨和質量控制。這系統在建造期間實時監察項目的狀況，從而增加準確度，預測風險並及時採取糾正措施。

IPQM 系統可與 BIM 結合，不單讓客戶取得相同的關鍵數據，亦可應用於設施管理。



Fabrication 裝嵌



Uniquely Capable

GammonSteel stands out in the structured steel industry because of our wholly owned and managed multi-million dollar fabrication facilities.

These facilities – the Gammon Technology Park at Tseung Kwan O in Hong Kong and our Pristine Workshop on the outskirts Dongguan in China – bring an unrivalled ability to handle awe-inspiring structured steel projects in terms of both size and technical complexity.

Sizable Advantage

The Pristine Workshop covers over 50,000 square metres with a main workshop the size of three football fields. Here 280 highly-skilled workers cut, shape and weld our steel structures using specialised machinery to turn detailed drawings into solid steel reality.

The size of the facility with two cranes capable of lifting over 100 tonnes each mean we can pre-assemble structures on a truly epic scale, ensuring a perfect fit and fast installation when we get on-site.





實力無出其右

金門鋼構能夠成為鋼結構業界的翹楚，全憑我們全資擁有管理完善、價值不菲的裝嵌設施。

位於香港將軍澳的金門科技園以及內地東莞市郊的原創金屬結構廠，是金門鋼構的兩大工場，足以處理規模宏大或技術上極具挑戰的鋼結構工程，實力無可比擬。

以規模創優勢

位於東莞的原創金屬結構廠佔地五萬平方米，主工場的面積相當於三個足球場大，熟練技工達二百八十人，能使用專用機器切割、塑造及焊接鋼結構，將精細的繪圖化為實在的鋼結構製品。

原創的規模宏大，備有兩部重型吊機，每架起重量超過一百噸，使我們可以預先進行大型的結構裝嵌，確保在地盤現場的施工快捷妥善。

Special Solutions

Hollow Section Steel – often used in the new wave of structural expressionism in architecture – is a speciality at Pristine, where our advanced Computer Numerical Cutting machine can produce perfect joints that will be on display for the life of a building.



Well Connected

Transporting and assembling structural steelworks is a challenging and potentially hazardous process. Detailed planning, innovative thinking and a focus on safety, both of workers and the public, are essential. It is here that GammonSteel's extensive experience and pre-assembly abilities truly pay dividends.

Both our fabrication facilities are close to the sea and major road networks to make transporting very heavy components much easier. And we can work closely with clients, contractors and the government to smoothly deliver extremely large steel pieces.





與別不同

在建築界最新興起的表現主義浪潮中，空心鋼 (Hollow Section Steel) 是首選的建材，亦是原創的專長所在。原創利用先進的電腦數控切割 (Computer Numerical Cutting) 機器，製造完美的接口和焊接點，工藝非凡。

四通八達 無往不利

運輸和裝嵌鋼結構製品的過程充滿挑戰，而且具有潛在危險。因此周詳的計劃、創新的思維，對工人和公眾安全的關注缺一不可。金門鋼構憑藉豐富的經驗和裝配技術，能夠兼顧各方面的要求，成效斐然。

我們在香港和內地的裝嵌設施接近海岸和主要道路網絡，運輸大型元件更方便快捷。加上與客戶、承建商和政府緊密合作，令巨型的鋼製品亦可順利交付。



On-Site Experts

Every project and every site is unique and this is where the skill, flexibility and vision of our specialist project managers come into play. Often operating at night to minimise disruption to the public, at great heights on tall buildings, or with delicate hollow steelwork, they need to plan and adapt to each situation – sometimes inventing new machinery and processes to overcome one-off challenges.

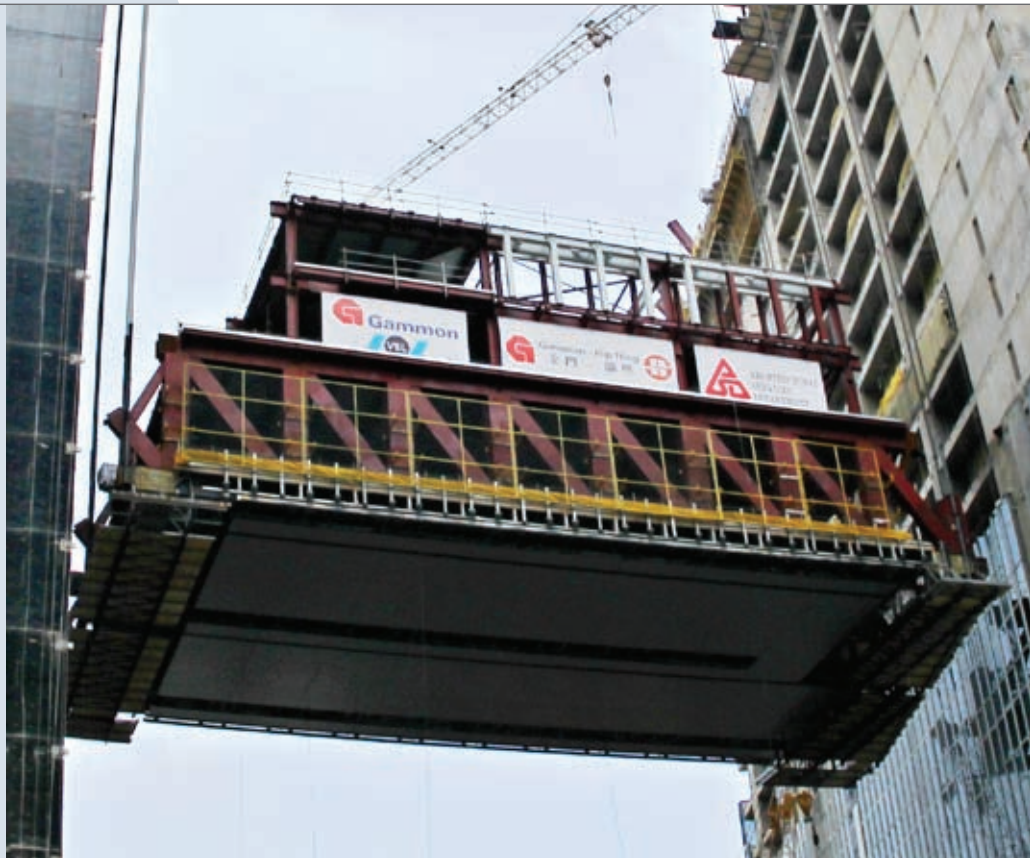
By fabricating very large structures, GammonSteel can reduce costly time on site. This has meant we have also become experts in heavy lifting, which requires careful structural analysis, a thorough understanding of the stresses involved and a light touch to synchronise every element of the lifting apparatus.

專家駐守現場

每項工程和每個地盤都是獨一無二的，因此我們委派項目經理駐守現場。他們具備專業技能，應變靈活，在現場發揮重要作用。為盡量減少對公眾造成的不便，裝嵌工程經常要在夜間進行，或需要在高處進行工序、及細心處理精巧的空心鋼製品 (Hollow Steelwork)。項目經理在不同的環境細心籌劃、隨機應變，有時更需要製作全新的機器和程序，以解決非一般的挑戰。

金門鋼構擅於裝嵌巨型結構，以節省地盤施工的寶貴時間。我們是起重方面的專家，精於縝密的結構分析，透徹了解當中涉及的應力 (stresses)，將起重設備的每個部分結合得天衣無縫。





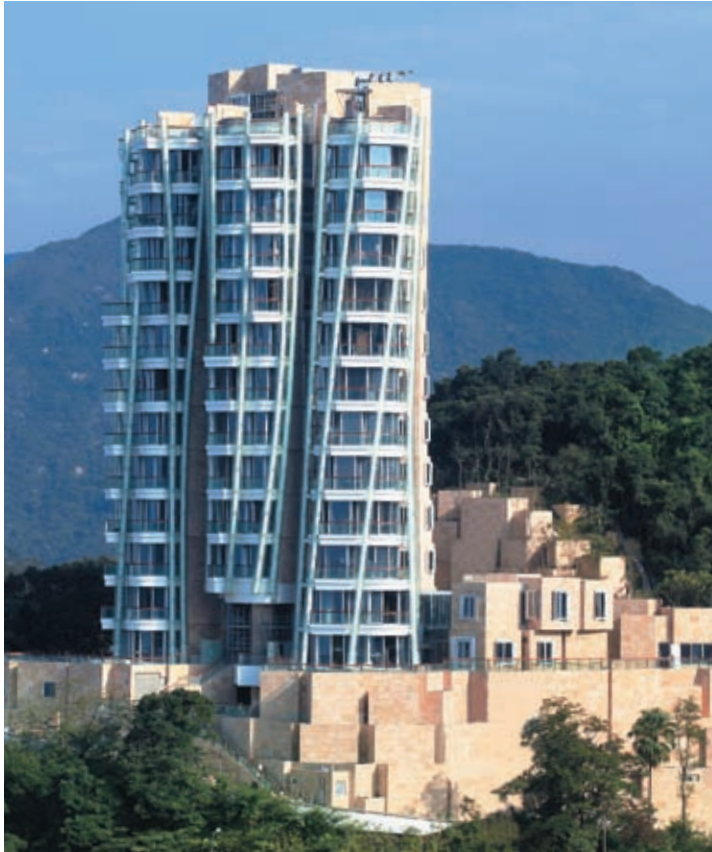
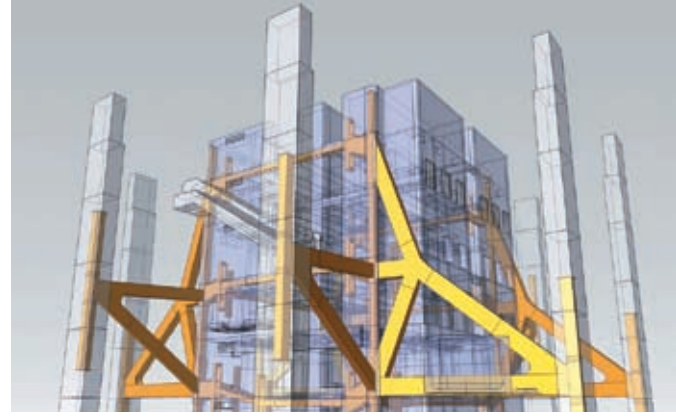
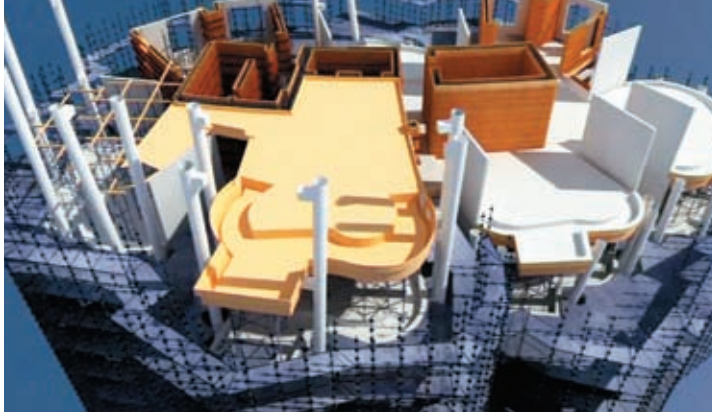


High-rise Achievements

更攀高峰

As new buildings grow in size and complexity, GammonSteel's ability to take fabricated steel to new heights is prized by builders and architects who know our expertise will let them reach for the skies with their designs.

新式的高層建築外型日趨宏偉、結構益漸精密。金門鋼構以過人實力，使裝嵌鋼製品突破界限，獲承建商和建築師一致好評。他們明白金門的專業知識和技術，能夠成就非凡的設計。



Vocational Training Council – Design Institute, Tseung Kwan O 將軍澳職業訓練局 – 香港知專設計學院

Client: Vocational Training Council

Consultant/Architect: P&T Architects and
Engineers; Ove Arup & Partners

Main Feature: 3,500 tonnage. Circular Hollow
Section diagrid with structural expressionism.



Residential Development at 53 Stubbs Road, The Peak 山頂司徒拔道53號住宅發展項目

Client: Swire Properties Ltd.

Design Architect: Frank Gehry and Gehry Partners

Consultant/Architect: Ronald Lu & Partners;
Ove Arup & Partners

Main Feature: 600 tonnage. Concrete Filled Tube
with double curvatures as stunning architectural
expression.



One Island East, Island East 港島東中心

Client: Swire Properties Ltd.

Consultant/Architect: Wong & Ouyang;
Ove Arup & Partners

Main Feature: 2,200 tonnage. Steel Outriggers
with plates thickness up to 150mm.



High-rise
Achievements
更攀高峰



Hysan Place, Causeway Bay 銅鑼灣希慎廣場

Client: Hysan Development Company Ltd.
Consultant/Architect: Wong & Ouyang;
Meinhardt

Main Feature: 9,000 tonnage. Construction in highly urban area; steel stanchion composite columns with plates thickness up to 100mm and steel composite floor.



iSQUARE, Tsim Sha Tsui 尖沙咀國際廣場

Client: Associated International Hotel Ltd.
Consultant/Architect: Rocco Design Architects;
Beony; Meinhardt

Main Feature: 350 tonnage. Large-scaled long-spanned roof feature.



The ONE, Tsim Sha Tsui 尖沙咀 The ONE

Client: Chinese Estate Holding Ltd.
Consultant/Architect: LWK & Partners; AECOM

Main Feature: 300 tonnage. Large-scaled long-spanned roof trusses erected by heavy-lifting method.



Stretching the Limits 超越極限

When you partner with GammonSteel, you don't only benefit from the many years of proven experience, technical competence, in design and fabrication but also build expertise and professional project management.

即使最具挑戰性的項目，金門鋼構都能運籌帷幄，成就非凡。我們能夠在工場預先裝嵌大型鋼製品，然後運輸至地盤，在現場進行專業的安裝工程。



Tamar Development Project, Central

中環添馬艦發展工程

Client: HKSAR Architectural Services Department

Consultant/Architect: Rocco Design Architects; Meinhardt; Scott Wilson

Main Feature: 5,000 tonnage. Large-scaled long-spanned roof trusses by heavy-lifting method.



IFC Retail Bridge, Central

中環國際金融中心購物廊

Client: Central Waterfront Property Development Ltd.

Consultant/Architect: Cesar Pelli; Rocco Design Architects; Ove Arup & Partners

Main Feature: 3,500 tonnage. Large-scaled long-span structures.



Stretching the Limits
超越極限



Hong Kong Convention & Exhibition Centre, Wanchai North 灣仔北香港會議展覽中心

Client: The Hong Kong Convention and Exhibition Centre (Management) Ltd.
Consultant/Architect: SOM; Wong & Ouyang
Main Feature: 26,000 tonnage. Large-scaled long-span truss by heavy lifting method.



Hong Kong International Airport – North Satellite Concourse, Chek Lap Kok 赤鱲角香港國際機場北衛星客運廊

Client: Hong Kong Airport Authority
Consultant/Architect: Mott Connell
Main Feature: 2,100 tonnage. Long-span roof trusses with multi-curvatures.



Victoria Park Swimming Pool Redevelopment, Causeway Bay 銅鑼灣維多利亞公園泳池重建

Client: HKSAR Architectural Services Department
Consultant/Architect: P&T Architects and Engineers
Main Feature: 500 tonnage. Long-span roof trusses.



In the Fast Lane

速度無可比擬

When speed is of the essence and disruption to important roadways has to be kept to a minimum, then GammonSteel's practiced hand can make all the difference to complete everything from bridges to noise barriers quickly and efficiently.

當成功的關鍵在於速度，同時要盡量減少令主要道路造成擠塞，金門鋼構的豐富經驗正好大派用場。無論建造橋樑或隔音屏障，我們都能以最高效率完成所有工程，成效有目共睹。



Castle Peak Road
Improvement Works,
between Ka Loon Tsuen &
Siu Lam
青山公路改善工程（嘉龍村至小欖段）

Client: HKSAR Highways Department

Consultant/Architect: Mouchel Halcrow JV

Main Feature: 2,500 tonnage. Noise Barrier;
Noise Enclosure and Footbridges.



Tsing Yi Viaduct – Noise Enclosure 青衣高架橋噪音屏

Client: HKSAR Highways Department
Consultant/Architect: MTR Corporation
Main Feature: 800 tonnage. Works include provision of the MPPA soundproof glass.



Kwai Chung Footbridge 葵涌行人天橋

Client: Sun Hung Kai Properties Ltd.
Consultant/Architect: Sun Hung Kai A&E
Main Feature: 500 tonnage. 120m-long Footbridge.



Tuen Mun Road Improvement Works, Eastern Section 屯門公路（東段）改善工程

Client: HKSAR Highways Department
Consultant/Architect: AECOM
Main Feature: 4,300 tonnage. Noise Barrier; Vehicular Parapet; Footbridge & Sign Gantry.



Stonecutters Bridge, Rambler Channel 藍巴勒海峽昂船洲大橋

Client: HKSAR Highways Department
Consultant/Architect: Ove Arup & Partners
Main Feature: 1,000 tonnage. Vehicular Parapet.



Lincoln House Footbridge, TaiKoo Place 太古坊林肯大廈行人天橋

Client: Swire Properties Ltd.
Consultant/Architect: Wong & Ouyang; AECOM
Main Feature: 150 tonnage. 30m-long Footbridge.



VTC Design Institute Footbridge, Tseung Kwan O 將軍澳職業訓練局 – 香港知專設計學院行人天橋

Client: Vocational Training Council
Consultant/Architect: P&T Architects and Engineers; Ove Arup & Partners
Main Feature: 500 tonnage. 55m-long Footbridge.



Incredible Architecture 非凡建築

Modern designs and cutting-edge architecture need precision tools, an eye for detail and the talent to improvise and innovate, things that GammonSteel has in abundance. That's why, from structural expressionism to fine features, clients come to us for perfect solutions.

現代設計和走在時代尖端的建築需要準確無誤的工具、觀察入微的眼光，隨機應變的態度，以及創意無限的思維，這些正是金門鋼構擁有的過人之處。因此由結構的表現主義以至精緻的建築特色，客戶都信賴金門提供的周全解決方案。



Domani at Pacific Place Mall, Admiralty

金鐘太古廣場 Domani

Client: Swire Properties Ltd.

Consultant/Architect: Heatherwick Studio;
Wong & Ouyang

Main Feature: 250 tonnage. Long-span plated
steel roof with structural expressionism.



Disneyland Station, Lantau 大嶼山迪士尼站

Client: MTR Corporation

Consultant/Architect: Ove Arup & Partners

Main Feature: 500 tonnage. Finely detailed
steelworks with structural expressionism.



Dior Hong Kong Flagship Shop Alteration and Addition Work, Tsim Sha Tsui

尖沙咀 Dior 旗艦店樓梯擴建工程

Client: Christian Dior (Far East) Ltd.

Consultant/Architect: PCI; WMKY

Main Feature: 150 tonnage. Finely detailed
steelworks with structural expressionism.



Penny's Bay Fire Station, Lantau 大嶼山竹篙灣消防局

Client: HKSAR Architectural Services Department

Consultant/Architect: HKSAR Architectural
Services Department

Main Feature: 600 tonnage. Finely detailed
steelworks with structural expressionism.



One Peking, Tsim Sha Tsui 北京道1號

Client: Glorious Sun Enterprises Ltd.

Consultant/Architect: WMKY; Rocco Design
Architects

Main Feature: 190 tonnage. Finely detailed
steelwork with structural expressionism.



Innovative Engineering 創意無限

No two projects are the same. Adaptability, the flair to innovate, the ability to create new processes, and the right specialist machinery are essential to get the job done. And if we don't have precisely the right machine, we'll build one for you.

世界上沒有兩個完全相同的工程項目。要順利完成任務，必須具備靈活的應變力、創新才華建立全新程序的能力，當然，適當的機械亦不可缺少。即使欠缺所需的機械，我們亦會為您特別建造一台。



Steel Formwork 鋼構模板

Main Feature: 5 – 30 tonnage. Design, supply and fabrication of steel formwork with hydraulic and mechanical operating system for in-situ RC construction, requiring a high degree of surface quality.



Launching Girder, Tsing Yi North Coastal Road 青衣北岸公路曳進吊樑機

Client: Gammon Construction Ltd.

Consultant/Architect: HKSAR Highways Department

Main Feature: Long-span launching girder with hydraulic and mechanical system.



Kowloon Station Development – Package 3, Kowloon Station 九龍站工程

Client: Sanfield Building Contractors Ltd.

Consultant/Architect: Sun Hung Kai A&E Ltd.

Main Feature: 350 tonnage. Long-spanned working platform by heavy-lifting method.



Tunnel Formwork, Nam Wan Tunnel at Tsing Yi 青衣南灣隧道模板

Client: Gammon Construction Ltd.

Consultant/Architect: Ove Arup & Partners

Main Feature: 200 tonnage [16m(L)x12m(W)x11m(H)]. Design, supply and fabrication of tunnel formwork with hydraulic and mechanical operating system.



Cathay Pacific Air Cargo Terminal, Chek Lap Kok 赤鱲角國泰空運貨站

Client: Gammon – Hip Hing JV

Consultant/Architect: Meinhardt; Aedas

Main Feature: 600 tonnage. Long-span steel formwork for fast cycling construction of in-situ RC structures.



Harbour Area Treatment Scheme (HATS) Stage 2A – Mugging System (from North Point, Wan Chai, Sai Ying Pun to Stonecutters Island) 淨化海港計劃第二期甲 (北角、灣仔、西營盤至昂船洲)

Client: Gammon Construction Ltd.

Consultant/Architect: AECOM

Main Feature: 600 tonnage. Noise Enclosure and Mugging System for 100m+ deep shaft with hydraulic and mechanical system.

GammonSteel | 金門 | 鋼構

The steel specialist

With the support of Gammon, GammonSteel plays a critical role in the development and construction of major projects throughout Asia. We are guided by these objectives:

鋼結構專家

我們的鋼結構業務於亞洲區大型承建工程中，穩佔舉足輕重的地位，我們一直堅守金門建築的宗旨：

Mission

To build for a better quality of life and living environment in a safe and sustainable manner.

使命

以可持續發展的原則安全建構更優質的生活及居住環境。

Vision

To be the Contractor of Choice in Hong Kong, China and Southeast Asia.

抱負

成為香港、中國內地和東南亞地區的首選承建商。



You've seen our strengths

Our years of experience and expertise.

Our industry-leading machinery and facilities.

Our commitment to quality and true partnership.

And, most importantly, our ability to take any project from planning and design through fabrication to construction and installation with GammonSteel in control throughout.

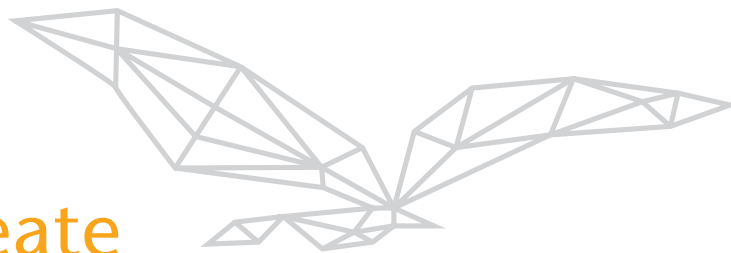
Isn't it about time you put our strength to work for you?

實力展現眼前

我們擁有多年的豐富經驗和專業知識；領導業界的機械和設施；對質量和真正夥伴關係的承諾。

最重要的是我們能提供一站式服務，由籌劃、設計、裝嵌以至建造和安裝都不遺餘力。

就讓我們以超卓的實力，為您創造過人的優勢。



we can create
everything
you can imagine

創造您想 | 實現您想



Gammon Construction Limited

28/F, Devon House
TaiKoo Place, 979 King's Road
Hong Kong

金門建築有限公司
香港英皇道979號太古坊
德宏大廈28樓

Tel 電話 (852) 2516 8823
Fax 傳真 (852) 2516 6260

www.gammonconstruction.com

Jointly owned by Jardines and Balfour Beatty
怡和集團與保富聯營

Gammon Technology Park

21 Chun Wang Street
Tseung Kwan O Industrial Estate
Hong Kong

金門科技園
香港將軍澳工業邨
駿宏街21號

Tel 電話 (852) 2695 6338
Fax 傳真 (852) 2695 3848

Dongguan Pristine Metal Works Limited

Fu Lu Sha Region, Sha Tian Town
Dongguan, PRC
Postal code 523990

東莞原創金屬結構有限公司
中國東莞市沙田鎮福祿沙管理區
郵編523990

Tel 電話 (867) 69 8688 080
Fax 傳真 (867) 69 8688 076